




# TAJ AL-RAHMAH

## TECHNICAL SERVICES L.L.C



 [+971527492002](tel:+971527492002)  
 [+971556173300](tel:+971556173300)  
 [www.tajalrahmah.com](http://www.tajalrahmah.com)

We revive buildings with total renovation and advanced waterproofing. Beyond surface fixes, we create a permanent moisture shield, ensuring your building's lifelong durability.

# ABOUT US



TAJ  
AL-RAHMAH

A Brief Story About The  
Company



"We specialize in reviving buildings through comprehensive renovation solutions and advanced waterproofing systems. We don't just treat superficial symptoms; we employ the latest technologies to create a protective shield that permanently prevents moisture penetration, ensuring long-term structural sustainability for years to come."

## Our Vision

To be the most trusted partner in the UAE for property care, building a legacy defined by customer satisfaction, safety, and technical reliability.

## Our Mission

To provide reliable, long-lasting protection for every building we touch. We strive to revitalize properties through expert restoration and safeguard them against the elements with premium waterproofing, ensuring total peace of mind for property owners.



TAJ AL-RAHMAH



# OUR SERVICES

Design-Build Integration: The seamless link between engineering design and site execution, preventing costly re-work and project delays.

## ALL WATERPROOFING 🔍

- GRP & FIBERGLASS • Combo System Roof
- Bitumen membrane • Polyurea Coating
- Epoxy Floor Coating • Injection



### GRP & Fiberglass Lining:

#### The Ultimate Protection for Tanks and Surfaces

At Taj Al Rahmah, we understand that tank corrosion and water leakage pose a significant threat to infrastructure and human health. Therefore, we provide GRP (Fiberglass Waterproofing) lining services—the most advanced technology in the insulation world. This system provides a solid, impenetrable protective layer that transforms your old or damaged tanks into completely renewed units.



### Bitumen Membrane:

#### The Integrated Engineering Solution for Protecting Structures Against Water Leakage

Moisture and water accumulation are among the most dangerous factors threatening the structural integrity of buildings. Over time, they lead to concrete deterioration and steel corrosion. At Taj Al Rahmah, we recognize that choosing the right waterproofing system is the most critical investment in a building's lifespan. Therefore, in this article, we highlight Bitumen Membranes as one of the world's most trusted and approved waterproofing solutions.



**Combo System Roof Waterproofing:**  
**The Smart Dual Solution for Water & Heat Insulation**  
 In light of harsh climatic conditions and soaring temperatures, waterproofing alone is no longer enough to protect buildings. At Taj Al Rahmah, we offer the integrated "Combo System"—a revolutionary technology that combines waterproofing, thermal insulation, and final finishing in a single process. This makes it the premier choice for modern projects, commercial buildings, and residential villas.



**Crack Injection:**  
**The Engineering Solution for Leak Repair & Structural Strengthening**  
 Cracks in concrete walls and ceilings are more than just a visual defect; they are pathways for water penetration and reinforcement steel corrosion. At Taj Al Rahmah, we provide professional Crack Injection services using the latest technologies and advanced chemical materials to treat cracks from within, restoring the structural integrity of the building.



**Epoxy Floor Coating:**  
**The Ideal Solution for High-Performance Floors**  
 Are you looking for a flooring solution that combines extreme durability, aesthetic appeal, and ease of maintenance? At Taj Al Rahmah, we provide professional epoxy floor coating solutions that transform traditional concrete floors into solid, glossy, and highly resistant surfaces capable of withstanding the harshest operating conditions.



**Polyurea Coating:**  
**The Fastest & Strongest Technology for Ultimate Protection**  
 In the world of waterproofing and surface protection, Polyurea stands out as the pinnacle of modern technology. At Taj Al Rahmah, we provide Polyurea coating solutions for projects requiring exceptional durability and record-breaking execution speeds. This system is distinguished by its ability to cure within seconds, providing a protective shield that lasts a lifetime.



# SWIMMING POOL



- Structural Construction
- Filtration & Pump Systems
- Advanced Waterproofing System

- Tile & Mosaic Fixing
- Maintenance & Repair Solutions



Building a swimming pool is not merely a construction task; it is a precise engineering project that requires a perfect balance between structural strength, mechanical systems, and aesthetic appeal. At Taj Alrahmah, we follow an "Integrated Execution" methodology to ensure the delivery of a pool built to last for generations. Here are the five core stages we follow



Every successful pool journey begins with a solid concrete foundation. In this stage, we focus on soil engineering and the use of high-quality, Sulfate-Resistant reinforced concrete.



## Filtration & Pump Systems

We consider the mechanical systems to be the "beating heart" of the pool. We don't just install pumps; we design a complete hydraulic cycle that ensures efficient water circulation and purification.



## Advanced Waterproofing System

This is where Taj Alrahmah's expertise truly shines; a beautiful pool is worthless if it leaks. We apply specialized waterproofing layers (such as GRP lining or flexible cementitious coatings) followed by rigorous pressure testing.



## Tile & Mosaic Fixing

Beauty lies in the details. We select the finest mosaics and ceramics that are resistant to chemicals and sunlight, ensuring they never lose their vibrant color. Precision: We use anti-bacterial and anti-fungal adhesives and grouting. We guarantee a perfectly level installation that provides a luxurious look while ensuring a smooth, safe surface for users.



**Maintenance & Repair Solutions**  
Our commitment does not end at handover. We provide comprehensive maintenance packages to keep all equipment in peak condition.  
**Services:** Our expertise includes water chemical balancing, filter cleaning, and underwater lighting maintenance, as well as full Refurbishment services to make old pools look and function like new.

## Electrical Works

- Panel Board Installation
- Conduit & Trunking
- DB Box Installation
- Low Voltage (LV) Systems
- Testing & Commissioning

### Panel Board Installation

The Distribution Board is the central command center for power control within the building. The Service: We supply and install Main Distribution Boards (MDB) characterized by their high load-bearing capacity and efficient current distribution.

### Conduit & Trunking

Securing cables begins with the strategic pathways they traverse within walls and ceilings. The Service: We execute conduit and metal trunking installations designed to facilitate easy future maintenance.

### DB Box Installation

Precise control for every specific zone or floor begins with the Distribution Boards (DB). The Service: We install sub-distribution boards with balanced Load Balancing to prevent power outages or breaker failures caused by excessive electrical pressure.

### Low Voltage (LV) Systems

Our expertise is not limited to power; it encompasses the vital infrastructure for communication and security.





## Testing & Commissioning

We do not consider a project complete upon installation; the most critical phase is verifying absolute safety.

# Plumbing & Sanitary

- Water Supply Networks
- Drainage & Sewage Systems



- Sanitary Ware Fixing
- Pump & Tank Installation

## Water Supply Networks

Establishing water networks requires precise planning to ensure balanced water pressure and continuous purity. The Service: Design and installation of hot and cold water networks using thermal PPR or PEX piping, which are resistant to corrosion and scale buildup.



## Drainage & Sewage Systems

Effective water drainage is the only guarantee to prevent unpleasant odors and blockages. The Service: Installation of internal and external sewage networks, adhering to precise engineering slopes to ensure smooth gravity-based flow.



## Sanitary Ware Fixing

The final touch that blends functionality with elegance. The Service: Meticulous installation of bathroom sets, washbasins, and mixers.



## Pump & Tank Installation

Ensuring water reaches all floors with consistent power and speed. The Service: Supply and installation of booster pumps and lifting pumps, in addition to installing overhead and underground water tanks.

# Tiling & Marble

- Ceramic & Porcelain Installation
- Marble & Granite Works
- Kitchen & Bathroom Tiling



- Exterior Wall Cladding
- Grouting & Surface Refinishing

## Ceramic & Porcelain Installation

Porcelain and ceramic are the preferred choices for homes and offices due to their variety of designs and high durability.





### Marble & Granite Works

Marble is the symbol of luxury, and granite is the symbol of strength. We treat these natural materials as pieces of art.



### Kitchen & Bathroom Tiling

These areas require special care due to their constant exposure to water and humidity.

The Service: Installation of wall and floor tiles with modern designs.



### Exterior Wall Cladding

The facade is the first impression of any building and must be able to withstand harsh weather conditions.

The Service: Installation of natural stone, exterior ceramic, and granite for facades.



### Grouting & Surface Refinishing

The final touches are what distinguish professional work from the rest. The Service: Application of epoxy or anti-fungal/anti-yellowing grout, along with professional marble grinding and polishing to restore the original luster of old stone.

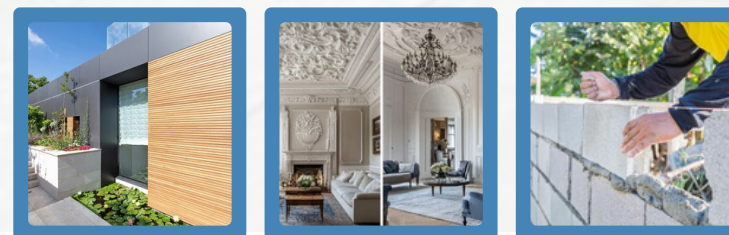
## Plastering & Block Works

- Construction Block Works
- Internal Plastering
- External Rendering

- Decorative Plaster & Finishes
- Plaster Repair & Patching
- Leveling & Surface Preparation



Plastering and block works form the fundamental skeleton that defines the features of any facility. At Taj Alrahmah, we believe that perfectly level walls and right-angled corners are the primary standards of quality, providing the ideal foundation for subsequent painting and decoration works. Here are the details of our comprehensive services:





# Painting



- Interior Painting
- Exterior Painting
- Decorative Painting

- Furniture Painting & Refinishing
- Paint Repair & Touch-ups
- Surface Preparation



**Transforming Spaces with Color and Precision**  
Painting is the final flourish that brings character and life to any space. At Taj Alrahmah, we believe that flawless application and vibrant colors are essential for creating the perfect ambiance. We provide the ideal finishing touch that elevates your space. Here are the details of our comprehensive services

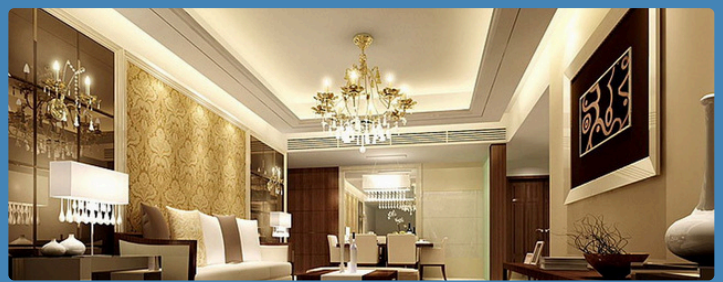


## False Ceiling & Light Partitions



- False Ceiling Installation
- Light Partition Installation
- Decorative Ceiling Design

- Partition Customization & Design
- Ceiling and Partition Repair & Maintenance
- Acoustic Solutions



**Designing Elegant and Functional Spaces**  
False ceilings and light partitions redefine interior spaces, offering both aesthetic appeal and practical benefits. At Taj Alrahmah, we believe that innovative design and precise installation are key to creating sophisticated and functional environments. We provide the perfect blend of style and utility for your space. Here are the details of our comprehensive services



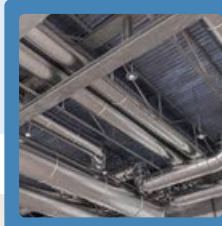
# Air Conditioning

- AC Installation & Repair
- Ducting & Ventilation Works
- Preventive Maintenance
- Air Filtration Systems



Integrated Solutions for Air Conditioning, Ventilation & Filtration (HVAC)

In an ever-changing climate, an HVAC system is no longer a luxury; it is an investment in comfort, health, and productivity. Taj Al Rahma is your trusted partner in providing the perfect indoor environment through cutting-edge HVAC technology. We combine technical precision with high quality to meet the diverse needs of the residential, commercial, and industrial sectors.



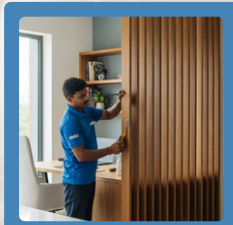
# Carpentry

- Wood Flooring & Parquet Installation
- Custom Cabinetry & Wardrobes
- Door Installation & Repair
- Wooden Partitions & Wall Paneling



Art of Modern Carpentry & Luxury Wood Flooring

Carpentry and woodwork are the soul that brings incomparable warmth and luxury to homes and offices. At Taj Al Rahma, we blend traditional craftsmanship with modern design to transform wood into functional masterpieces that serve your daily needs and stand the test of time.





# Cleaning



- Post-Construction Cleaning
- External Glass & Facade Cleaning
- Industrial & Warehouse Cleaning
- Floor Deep Cleaning & Polishing
- Water Tank Cleaning & Disinfection



Cleanliness is the true reflection of any facility, whether residential or commercial. At Taj Al Rahma, we provide advanced cleaning solutions that go beyond surface-level appearance to include deep disinfection and meticulous attention to detail. By utilizing the latest equipment and eco-friendly materials, we ensure a safe, healthy, and welcoming environment for everyone.



**"Taj Al-Rahma Company is proud to be an integral part of the development journey in the United Arab Emirates for over 16 years. Since our inception, we have been committed to delivering services built on quality, integrity, and high professionalism."**



# THANK YOU

"Thank you for your time. You have now explored our vision and capabilities. Whether you need to revitalize your property through comprehensive restoration, or safeguard it with the latest waterproofing technologies, our team is ready to serve you across the entire UAE.



+971556173300



+971527492002



info@tajalrahmah.com



www.tajalrahmah.com

**TAJ AL-RAHMAH TECHNICAL SERVICES L.L.C**

